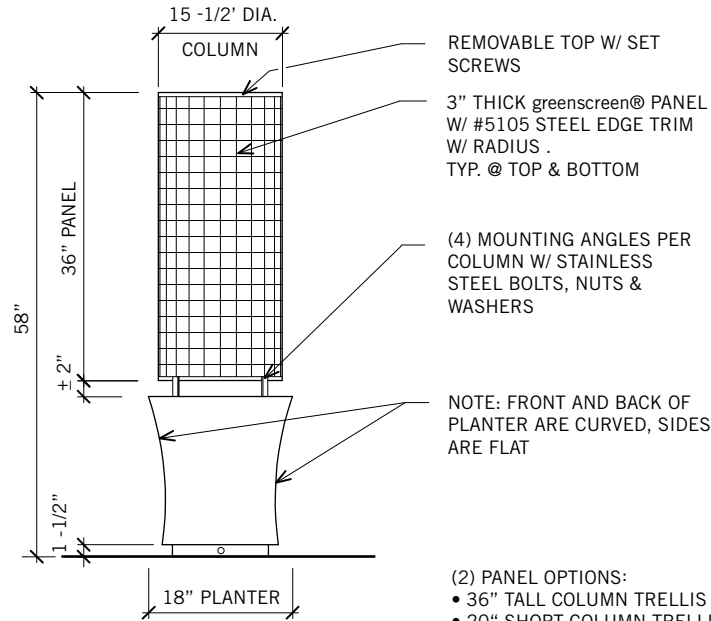
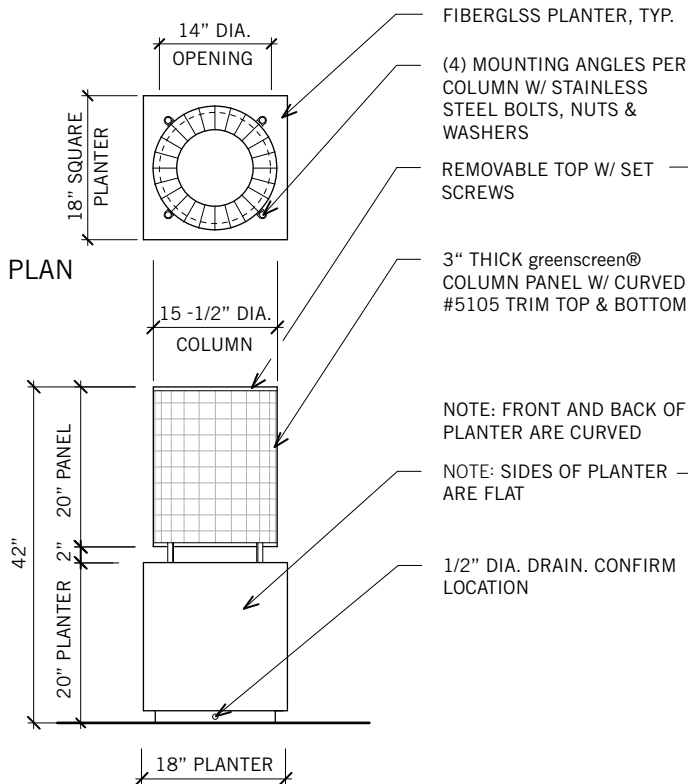


**HEDGE - A - MATIC**  
**SQUARE PLANTER**  
WITH COLUMN

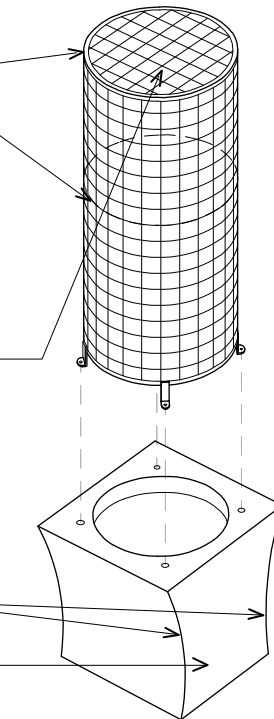


SIDE ELEVATION - TALL

- (2) PANEL OPTIONS:
- 36" TALL COLUMN TRELLIS
  - 20" SHORT COLUMN TRELLIS



FRONT ELEVATION - SHORT



NOTE:  
Soil volume = 2.4 cu.ft.  
Planter, screen, hardware without soil = 25 lbs.  
Total approximate weight w/ soil + plants = 85 lbs.

**SQUARE PLANTER WITH COLUMN OPTIONS**  
**ELEVATION & PLAN**