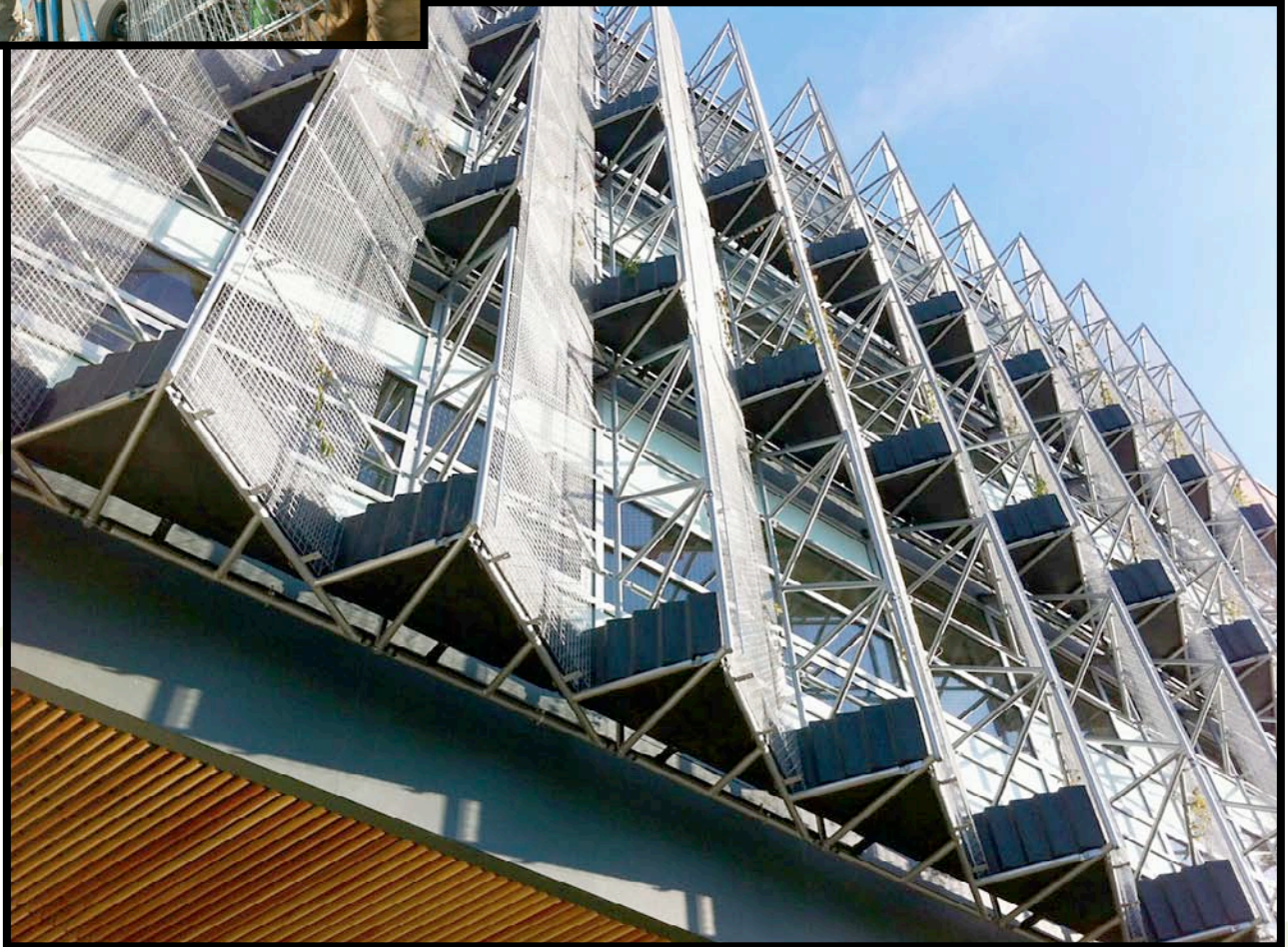




**Center for Interactive Research on Sustainability (CIRS)-
Vancouver, B.C.**

Modular greenscreen® trellis panels are installed onto a sawtoothed facade structure with a triangulated elevated planter system.

Hardiness Zone 8b



Installed 2011



greenscreen®

1743 S. LA CIENEGA BLVD. LOS ANGELES, CA. 90035 T - 800.450.3494

www.greenscreen.com