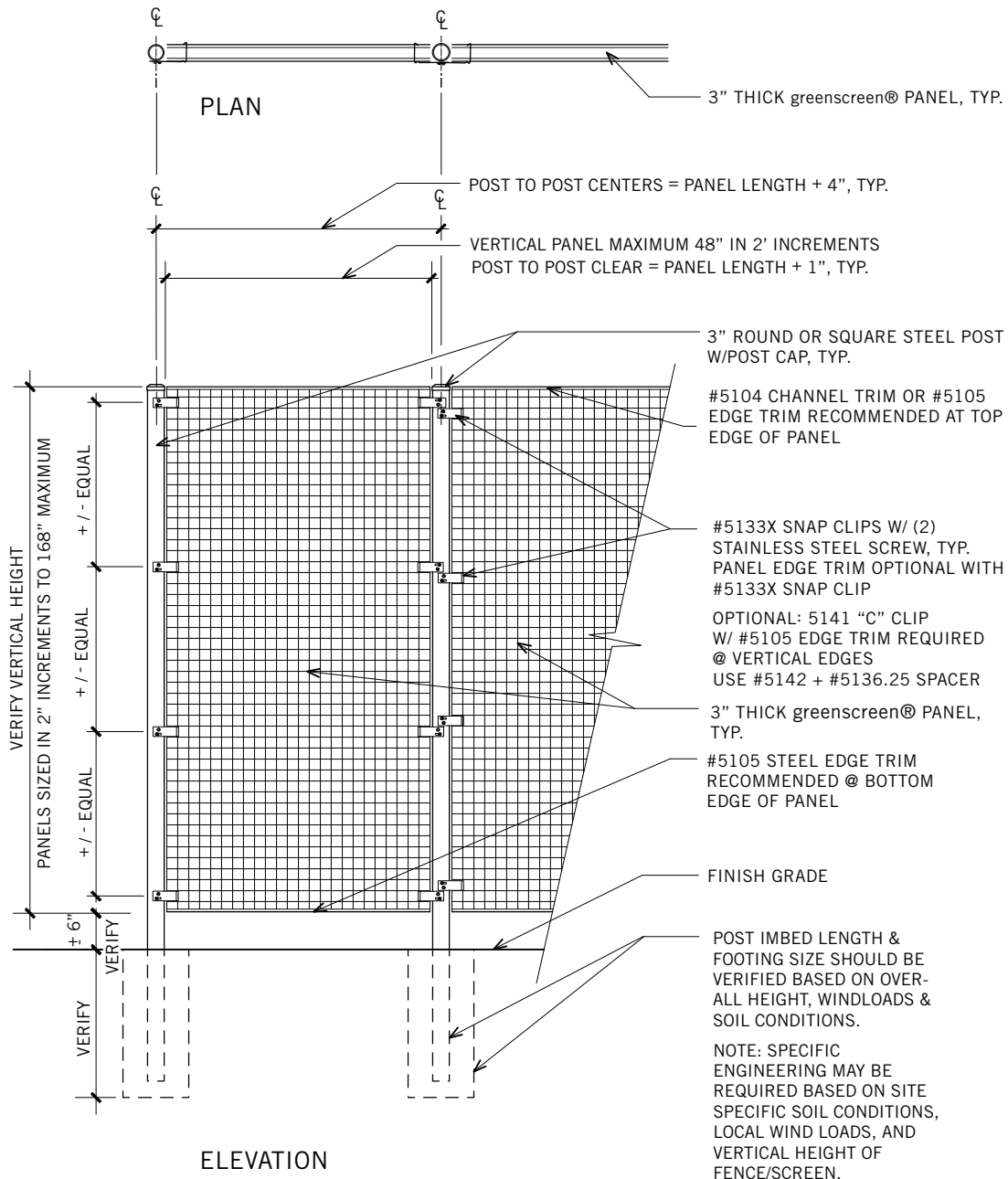
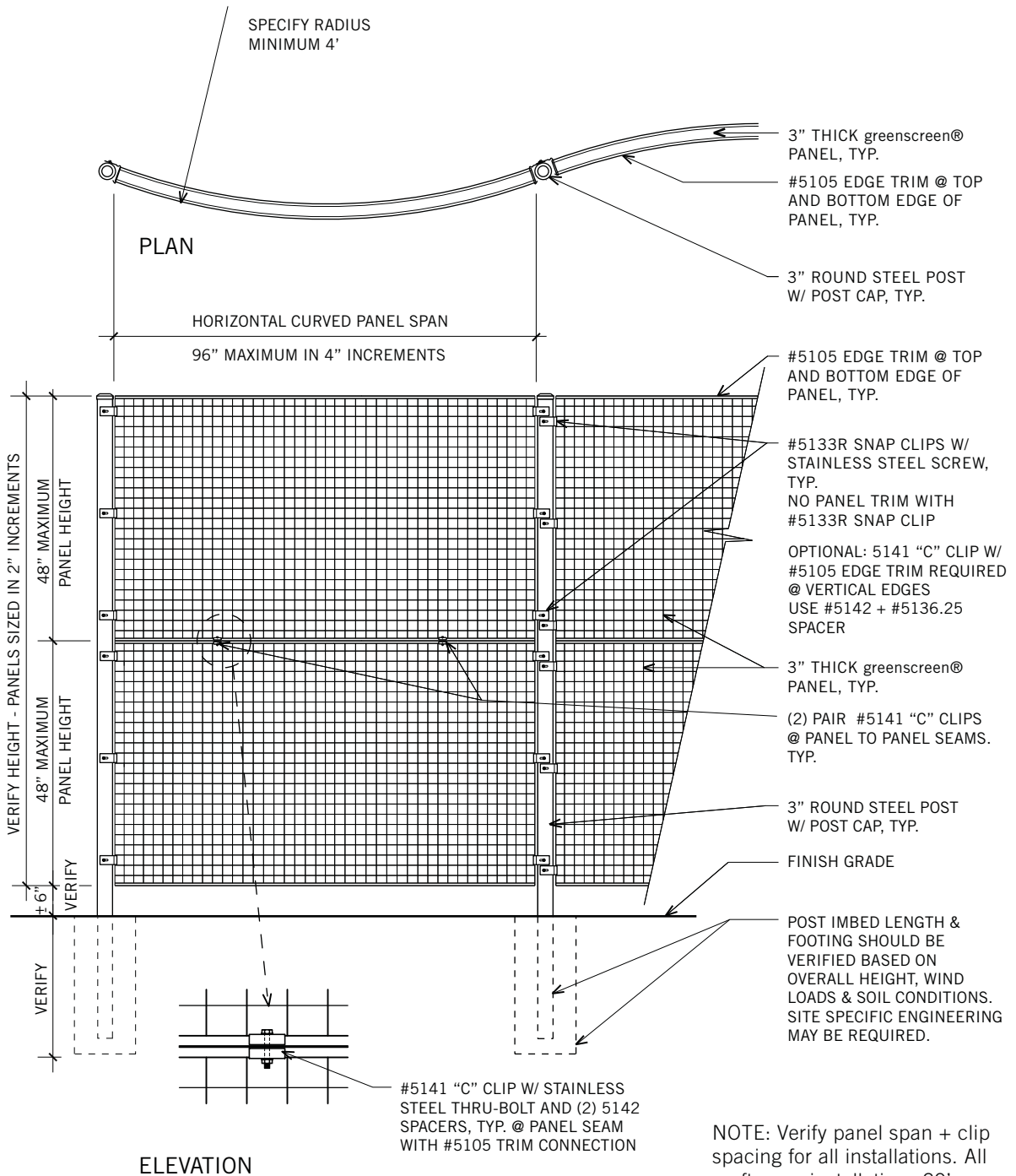
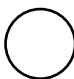


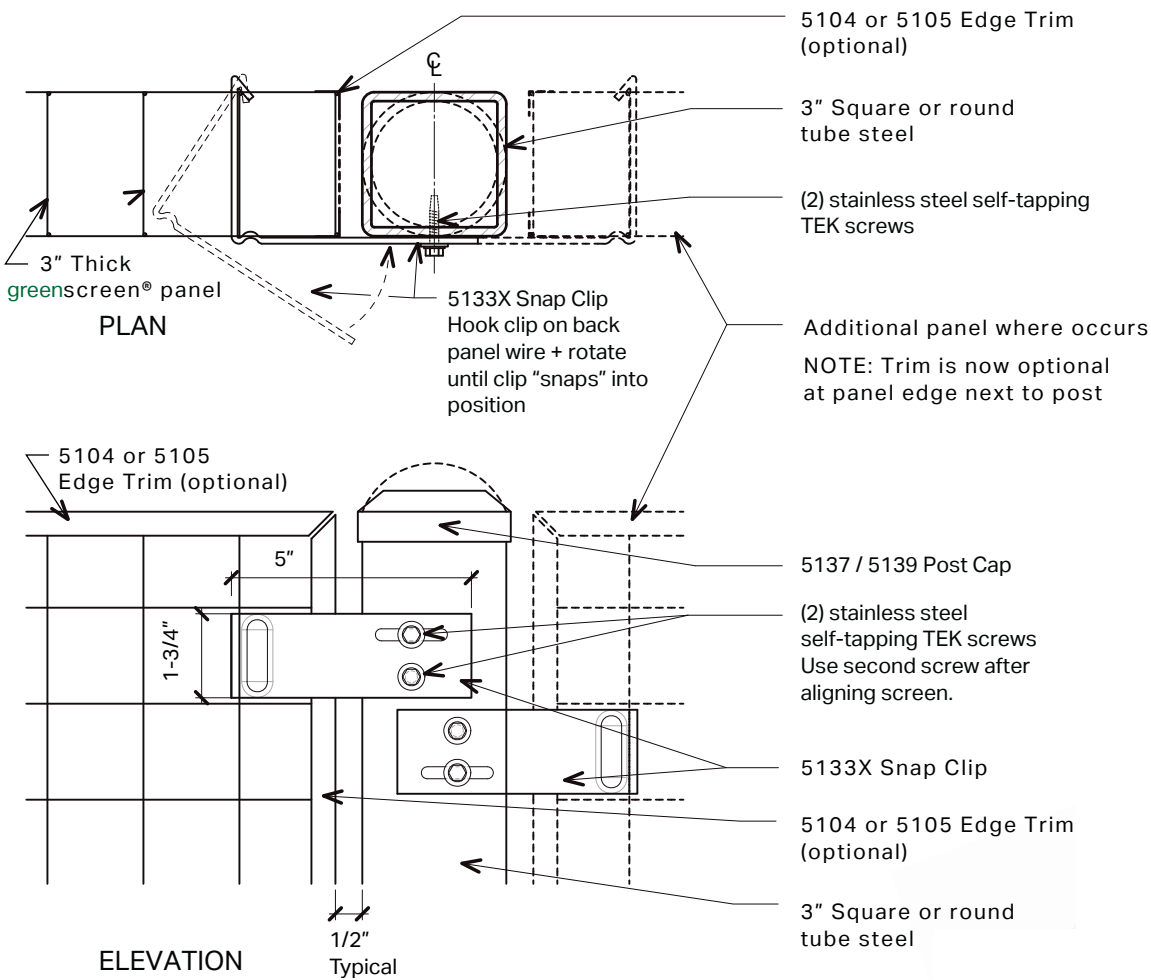
○ FREESTANDING HORIZONTAL — FENCE / SCREEN



○ FREESTANDING VERTICAL — FENCE / SCREEN



 FREESTANDING CURVED — FENCE / SCREEN



5133X SNAP CLIP

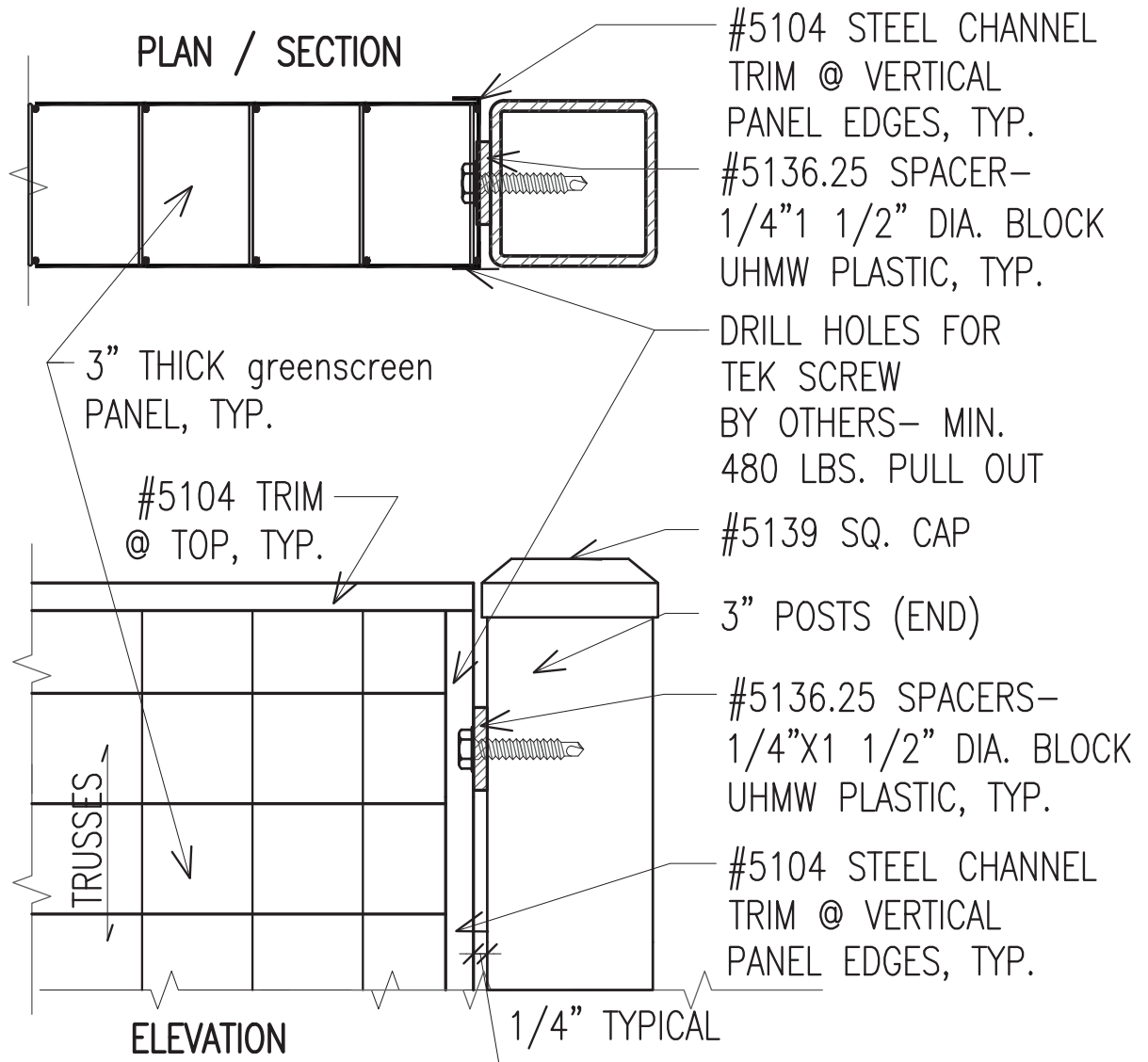
The greenscreen® 5133X Snap Clip can mount to round or square posts and is used without edge trim. Access to only one side of the panel is necessary. For multiple side-by-side applications the clips can be staggered. Mounting holes are for 1/4" diameter self-tapping screws.



SNAP CLIP TO SQUARE POST



greenscreen®



TEK SCREW- STL MOUNTED

accessories

Steel Posts: Used for freestanding modular screens and fences. Available square or round in 1" incremental lengths.

Size:
3" square or 3" diameter round and up to 16' maximum length

Materials: Steel
Square: ASTM A-500B 3/16" thick
Round: ASTM A-1101 .111" thick
(Nominal 2-7/8")

Colors:

- ~ green
- ~ black
- ~ silver
- ~ bronze
- ~ white

Post Caps: Available to fit round or square posts.

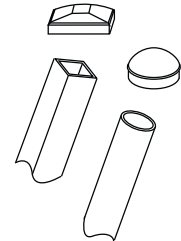
Size:
Round cap: 3½" diameter o.d.
Square: 3¼" x 3¼"

Materials:
Round cap is die cast steel.
Square is stamped steel.

Colors:

- ~ green
- ~ black
- ~ silver
- ~ bronze
- ~ white

**Steel Posts
Post Caps**

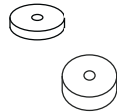


5136/5136.25 Round Spacer: Used for spacing mounting clips away from porous mounting surface.

Size:
½" or ¼" thick x 1½" diameter.
With 7/16" hole.

Materials:
UHMW High density,
Recycled non UV degradable plastic

Color: black

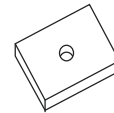


5142 Spacer: Used for spacing mounting clips away from wall or floor surface.

Size:
½" thick x 2⅝" x 1¾" with 7/16" hole

Materials:
UHMW High density,
Recycled non UV degradable plastic

Color: black



5131 Flex "C" Ring: Used for "in-field" aligning greenscreen® panels edge to edge (without trim.)

Size:
Approximately 5/16" diameter

Materials:
16 gauge galvanized steel

Color: galvanized



accessories

Our Accessory Items list will provide your project with the necessary edge trims, mounting and joining clips, straps, posts, and caps to match your specified finishes with maximum flexibility.

Size:

½" leg x 3¼" wide x ½" leg

Materials:

20 gauge galvanized steel

Colors:

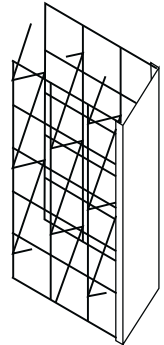
- ~ green
- ~ black
- ~ silver
- ~ bronze
- ~ white

Used as a closure strip at edges of **greenscreen®** panels. Recommended on panel edges adjacent to pedestrian traffic or where edge reinforcement for plant maintenance is desired. Not recommended at bottom edge of panel to prevent pooling of water.



5104

Steel Channel Trim



Size:

½" leg x ½" leg

Materials:

20 gauge galvanized steel

Colors:

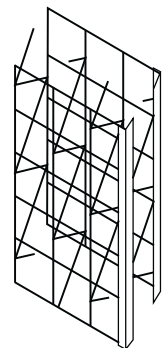
- ~ green
- ~ black
- ~ silver
- ~ bronze
- ~ white

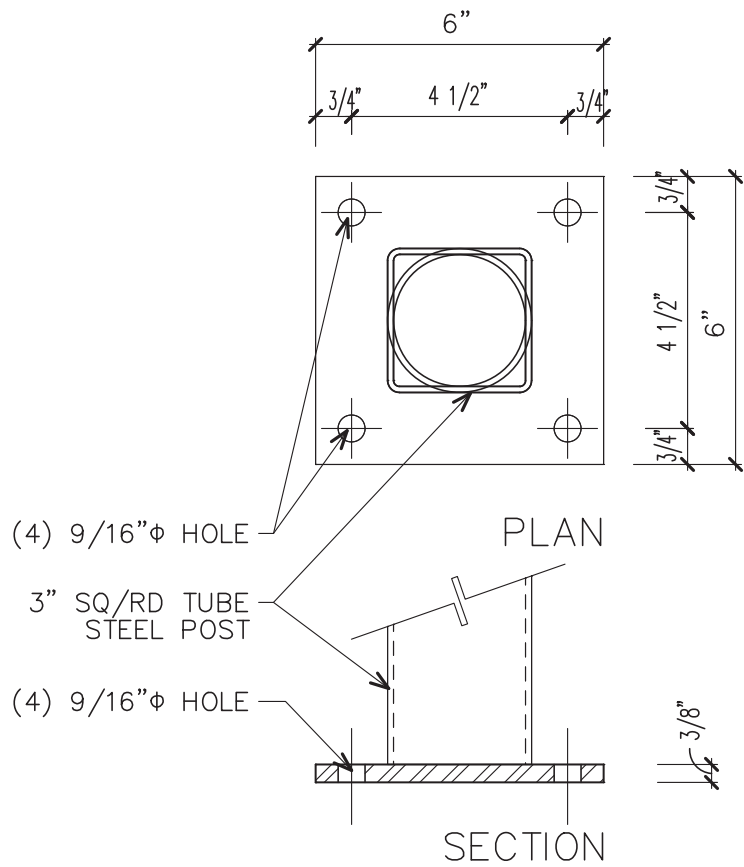
Used as closure strip at edges of **greenscreen®** panels. Recommended on panel edges adjacent to pedestrian traffic or where edge reinforcement for plant maintenance is desired.



5105

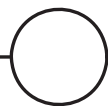
Steel Edge Trim





6"x6"x3/8" BASE PLATE *

SCALE = 3": 1'-0"



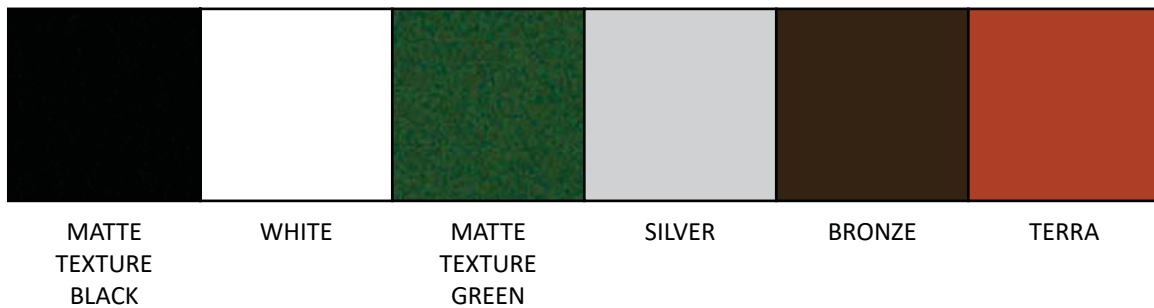
* Project engineer should specify base plate design based on wind loads, overall height and local building codes. Most engineers consider the panel solid when fully loaded with mature plant material.

* 8" x 8" x 1/2" and 6" x 6" x 3/8" base plates are carried in stock.

* Custom size base plates are available upon request.

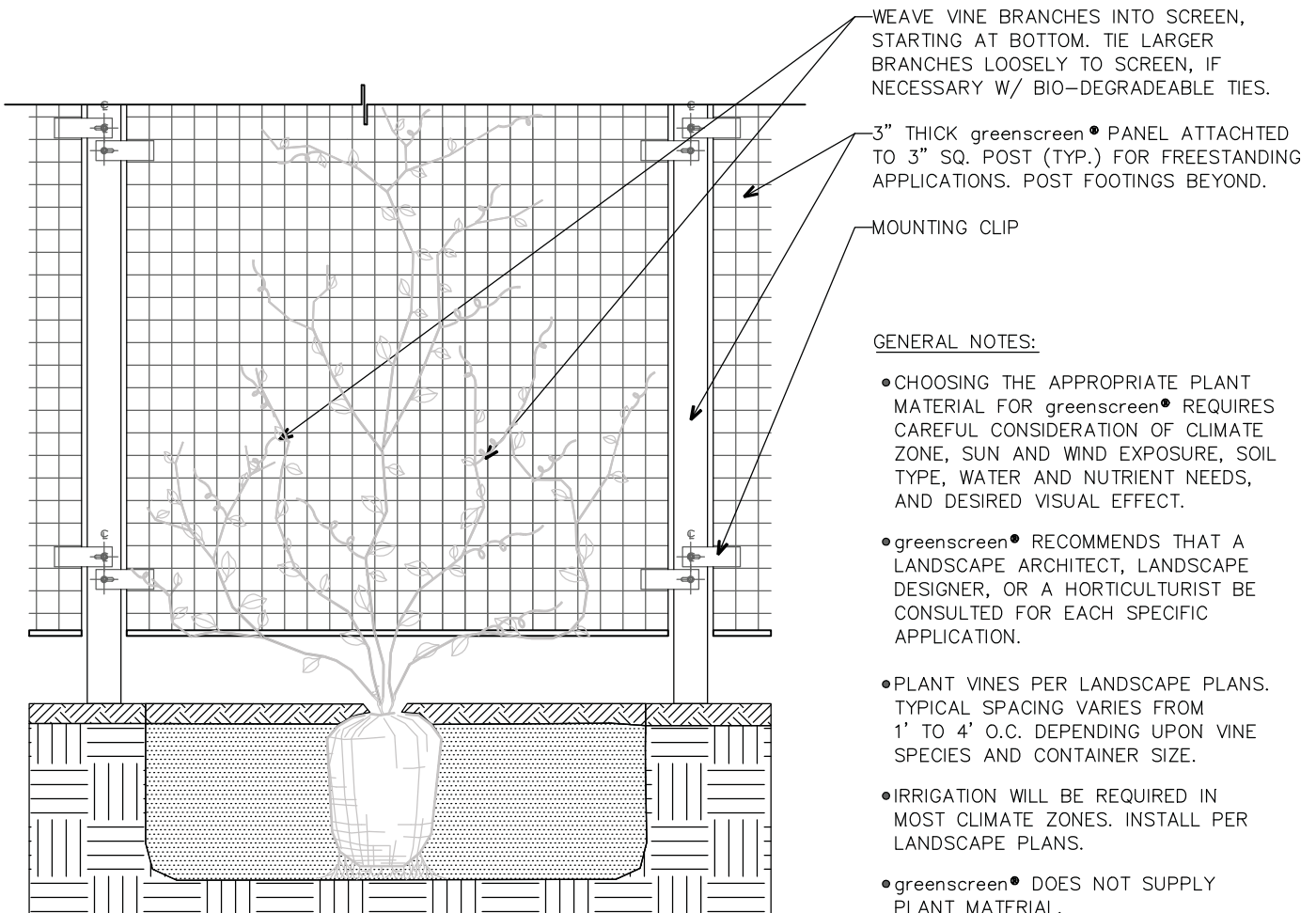
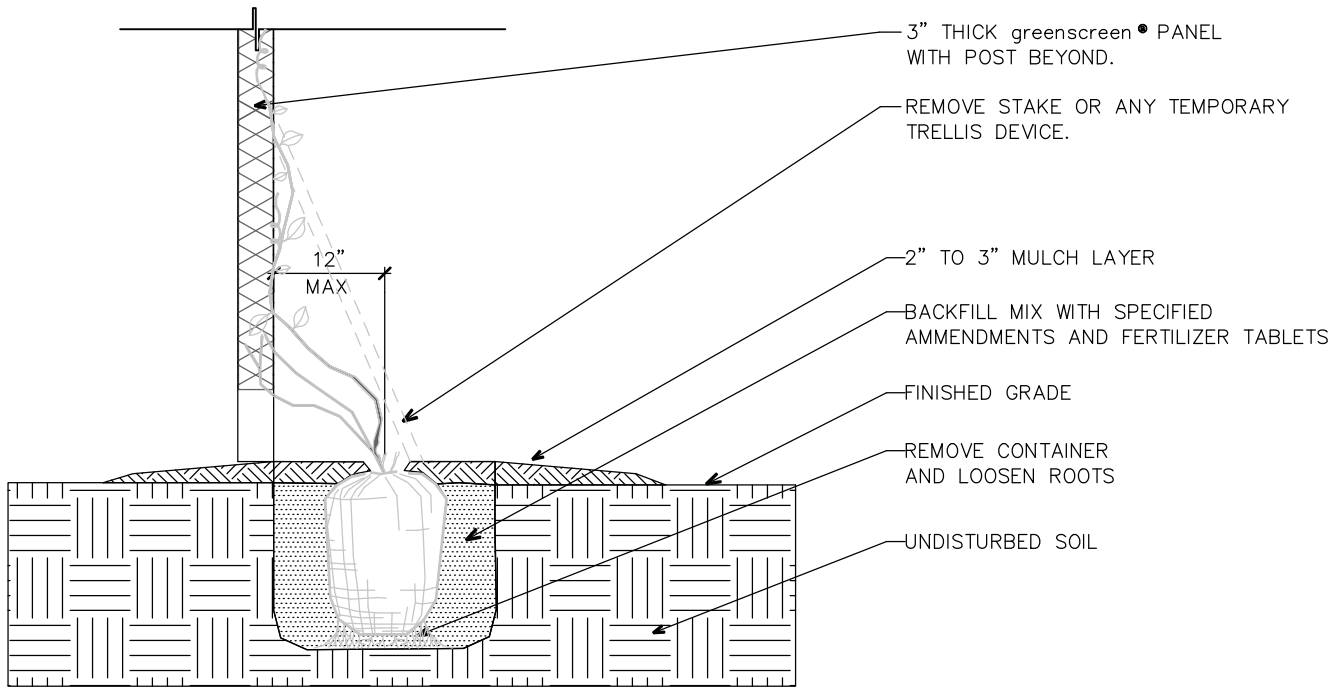


This is the current list of our standard colors for panels, trim, and mounting hardware. Custom colors are available. Note that color rendering can shift depending on your monitor calibration and viewing conditions. For an exact representation of these colors please request a set of our color chips.



<http://greenscreen.com/products/color-chart/>

COLOR CHART



greenscreen® VINE PLANTING DETAIL

SECTION AND ELEVATION – TYPICAL FOR POST MOUNTED APPLICATION, DETAIL SIMILAR FOR WALL MOUNTED PANELS.

SCALE = 3/4": 1'-0"

